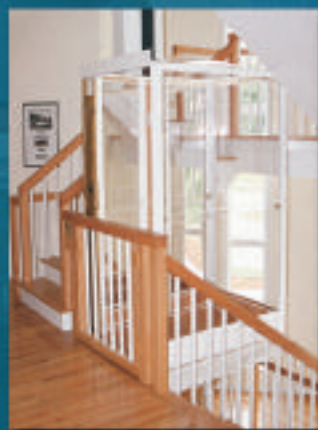


ELEVETTE®

AMERICA'S MOST CUSTOMIZABLE
HOME ELEVATOR



INCLINATOR
COMPANY OF AMERICA



Why put an elevator in a home?

Simply put, it's a matter of convenience. A home elevator makes it easier for people and items to move from floor to floor. Whether you're carrying groceries to your upstairs kitchen in a waterfront home or heading to the lower level garage in a mountain resort, not having to walk stairs makes your life easier.

It's also a sound investment. The increase in your home's value often exceeds the cost of an elevator. It also makes your home ideal for resale to the growing market of older buyers.

It fits in any multi-floor home. It uses a quarter of the space of a staircase. It can be designed into new construction or added during renovation. It can be housed in a shaft or in an open environment.



Why choose an Elevette home elevator?

There are more Elevette® elevators in homes across the country than any other brand. Architects love them because of the near endless design possibilities. Homeowners love them for their beauty and reliability. And Inclinator's Machine Roomless elevator takes up even less space in your home. Whatever the reasons, Inclinator's Elevette® is the number one choice of home elevators.

Not only did we invent the home elevator, but we continue to perfect it.

Reliable products. Exceptional service.

In addition to having the most choices and custom features in the industry, Inclinator is known for building reliable products and maintaining a solid network of certified installers and service contractors. Inclinator is the best name in the industry because it builds the best home elevator and backs it with valuable technical support and exceptional customer service.

Inclinator offers a two-year warranty that guarantees that the elevator and its parts will be free of defects in workmanship and material.



Inclinator headquarters



Inclinator Company of America

goes back to 1923, when Harrisburg, PA, inventor C.C. Crispen created a way to enable his ailing friend to travel from floor to floor. His idea was to build a seat that would climb stairs. He called it the Inclinator. Five years later, he built his first Elevette elevator as an alternative for homes with winding staircases.

Along the way, vertical wheelchair lifts, package stair lifts and dumbwaiters were added. Inclinator remains a family-owned business located in Harrisburg, PA. Every Inclinator product is manufactured and assembled in its South Central Pennsylvania plant.



Inclin-ator stair chair



Elevette home elevator

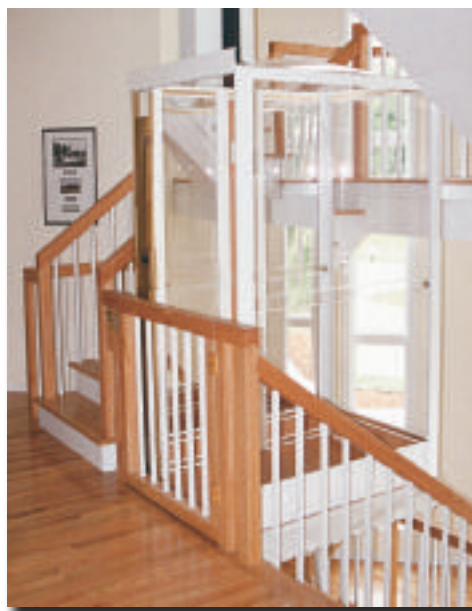


Car Styles

“Custom” is a standard at Inclinator.

Inclinator handcrafts each elevator, so car sizes can be any dimension up to 15 sq. ft. Inclinator elevators can have up to three door openings in any configuration. Other custom features – for the five car styles – include woods and finishes, handrails, lighting, gates and control plates.

Consult your local codes before ordering.
Tax deductible when doctor recommended.



ELEVETTE® 500

Metal frame with acrylic panels

(Not available with MRL Chain Drive)



ELEVETTE® 400

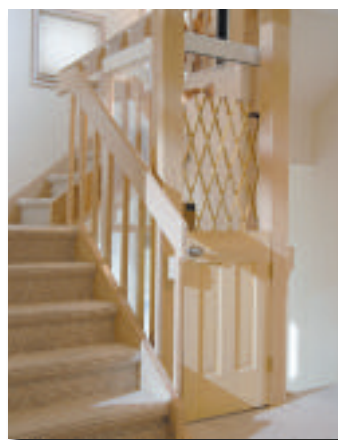
Solid wood with hardwood veneer raised or recessed center panels



IN-SHAFT

Most Inclinator elevators operate within an enclosed shaft. Occasionally, shafts are designed into projects and saved for future elevator installation. Prior to use as an elevator shaft, it can be used as closets stacked on top of each other.

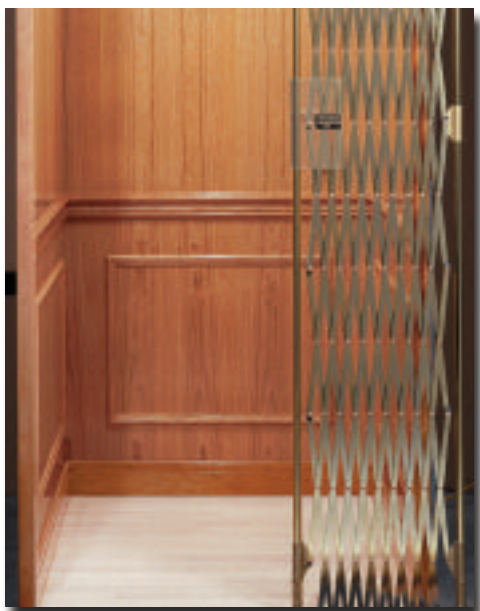
Consult local codes.



NO SHAFT

Inclinator's machine room elevators can be installed in an “open” environment – running up the center of open winding stairs, next to stairways and where no stairs exist.

Consult local codes.



ELEVETTE® 300

Smooth hardwood center panels with crown, chair, baseboard and picture molding



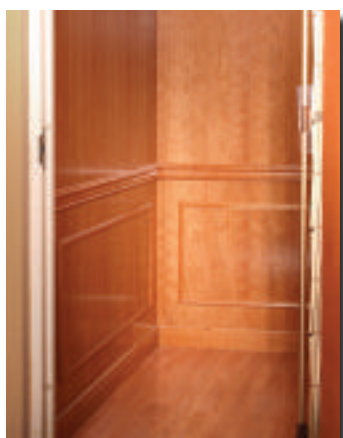
ELEVETTE® 200

Smooth hardwood veneer panels with square, flush corners



ELEVETTE® 100

Choose from thousands of Formica® and Wilsonart® laminates for covering walls



WHAT IS A MACHINE ROOMLESS (MRL) ELEVATOR?

Historically, home elevators included a machine room that housed the drive system. This was a closet-sized room that was usually located at the lowest point of the elevator. Inclinator offers two drive systems that are housed entirely in the hoistway (elevator shaft). This eliminates the need for a machine room, thereby taking up less square footage and reducing construction and installation costs.

Inclinator offers two machine roomless elevators:

ELEVETTE® Gear Motor Chain Drive MRL Elevator
(see page 15)

INCLINATOR® LX Gearless Motor Traction Drive MRL Elevator

- The industry's most advanced technology
- Smoothest and quietest ride
- Environmentally-friendly: reduced energy consumption; longer motor life; no hydraulic or gear oils (no risk of soil contamination); uses less space and construction materials
(see separate literature or visit www.inclinator.com)

Car Finishes & Accessories

Woods

Just about any wood species available can be used for Elevette® construction. The majority of cars are made using hardwoods and veneers in oak, maple, cherry and walnut. Exotic woods like rosewood and teak are also used. Most cars are finished in the factory, but they can remain unfinished for on-site, custom finishing. Elevette® 100 can be built with any one of the thousands of Formica® and Wilsonart® laminates.



Natural Oak



Natural Birch



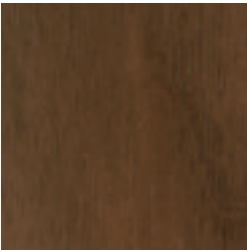
Natural Cherry



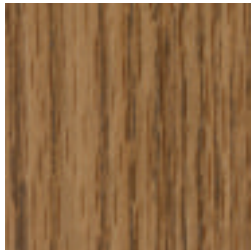
Natural Mahogany



Natural Maple



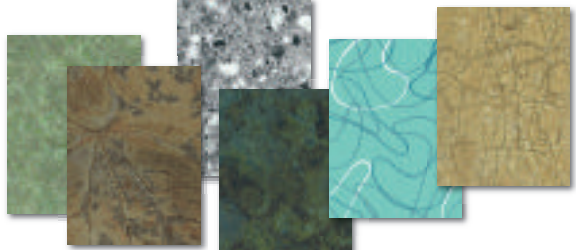
Natural Walnut



Dark Oak (stain)



Medium Oak (stain)



See your local Formica® and Wilsonart® supplier for samples. Finishes include solid colors, textures & patterns, metallic and wood grains.



Handrails (Optional)

Most elevators use one of three handrail designs. Flat wood handrails are finished to match walls. Flat metal and rounded metal handrails are available in various finishes. Custom designs and finishes are always available.



Bronze round handrail with natural cherry wood.



Wood (to match car finish)



Brass (flat)



Stainless Steel (flat)

Actual colors may vary slightly from printed samples.



Brass (round)



Stainless Steel (round)



Bronze (round)

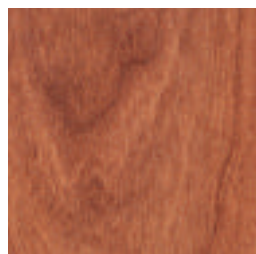


Oil-Rubbed Bronze (round)



Floors

Inclinator elevators include one of Wilsonart® Flooring's hardwood laminate finishes: oak, cherry, maple or walnut. Elevators can also be ordered with custom flooring or with unfinished oak for custom on-site finishing.



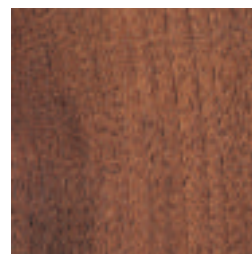
Cherry (laminated)



Natural Oak (laminated)



Birch (laminated)



Walnut (laminated)



Unfinished Oak



Actual colors may vary slightly from printed samples.

Lights & Trims

Every Elevette® elevator comes with one ceiling light. Standard lights are round down lights with glass lenses in several finishes.



Standard light with bronze ring.

STANDARD: 6" Down Light with Glass Lens



Brass Ring
(standard)



White Ring
(optional)



Polished Stainless
Steel Ring (optional)



Duranotic Ring
(optional)



Bronze Ring
(optional)

OPTIONAL: Down Lights Flush with Dome



Surface Mounted Light
2" x 9-1/2" x 9-1/2"



6" Down Light
with black cone baffle
& white trim ring



4" Down Light
with white cone baffle

Actual colors may
vary slightly from
printed samples.

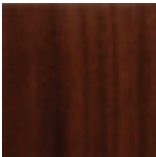
Car Finishes & Accessories

Accordion Fold Gates (Optional)

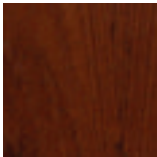


Extruded gate track matches metal finish on either gate option.

Standard Hardwood Finishes



Walnut



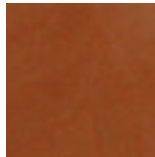
Teak



Mahogany



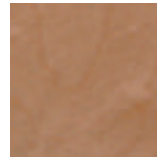
Cherry



Birch



Oak

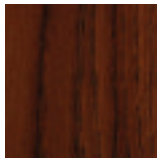


Maple

Standard Vinyl Laminates



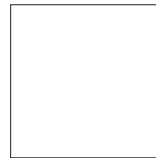
Maple



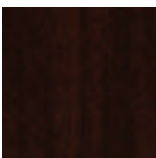
Dark Oak



Light Oak



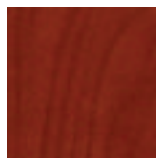
White



Walnut



Birch

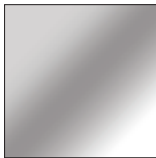


Cherry



Mahogany

Standard Acrylics (for vision panels)



Clear



Bronze (tint)

Accordion Fold Gate Metal Finishes



Silver



Bronze



Brass



White



Beige

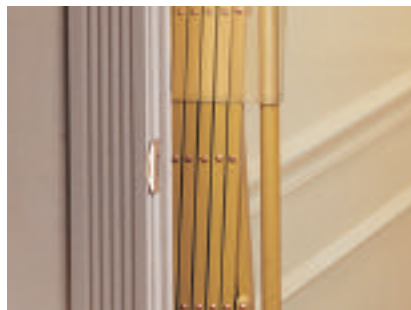


Elevator with clear acrylic vision panels and silver metal accordion fold gate.

Actual colors may vary slightly from printed samples.



Collapsible Gates (Standard)



Standard Metal Finishes



Silver



Bronze



Oil-Rubbed Bronze



Brass



Duranotic

Actual colors may vary slightly from printed samples.



No other manufacturer offers more custom features.

- Custom sizes up to 15 sq. ft.
- Door openings on 1, 2 or 3 sides
- Nearly all wood species available
- Stained or painted in factory or on-site
- Hardwood veneer floor (finished or unfinished)
- In-shaft or no shaft (consult local codes)
- Machine room and machine roomless
- Cable Drum, Hydraulic & MRL Chain Drives
- 500 lb., 750 lb. and 950 lb. capacity
- Automatic safety devices
- Collapsible or accordion fold gate

Car Operating Stations

For Machine Roomless Elevators

MRL car control and remote plates have a contemporary design more closely resembling commercial elevators. Various finishes are available to complement the elevator’s design and the home’s interior.



Car Control Station (in elevator)



Remote Station (at each landing)

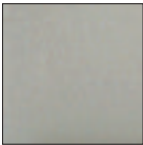


Shown in Polished Stainless.

Standard Finishes



Brushed Stainless



Polished Stainless



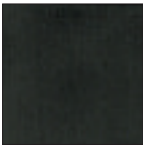
Brushed Brass



Polished Brass



Bronze



Duranotic

Actual colors may vary slightly from printed samples.

Note: Plate configuration determined by the elevator’s use requirements.
Regardless of plate finish, top & bottom end caps and buttons are polished stainless.



For Machine Room Elevators

Car control and remote plates come in a variety of finishes. Plate configuration is determined by the elevator's use requirements.



Car Control Station (in elevator)



Remote Station (at each landing)

Actual colors may vary slightly from printed samples. Consult local codes.

Standard Finishes



Bronze



Oil-Rubbed Bronze



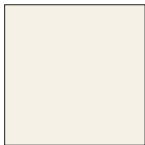
Brushed Brass



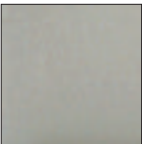
Brushed Stainless



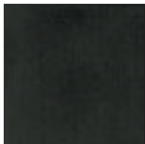
Polished Brass



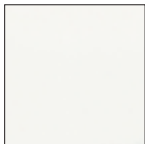
Almond Kydex



Polished Stainless



Duranotic



White Kydex



Standard

Arc

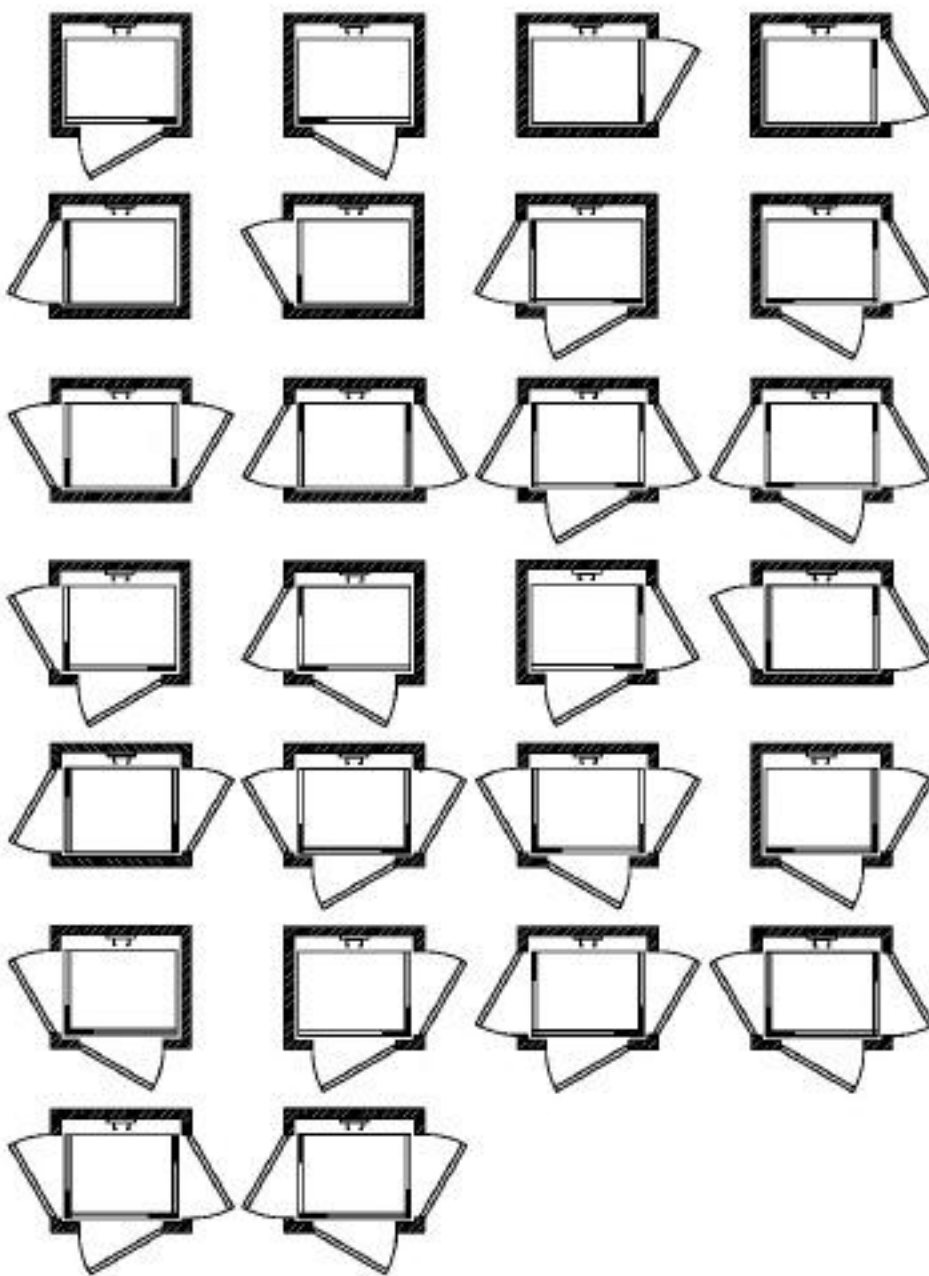
Bell

Choose the original rectangular plate shape, or one of two decorative plate shapes – available at no up-charge.

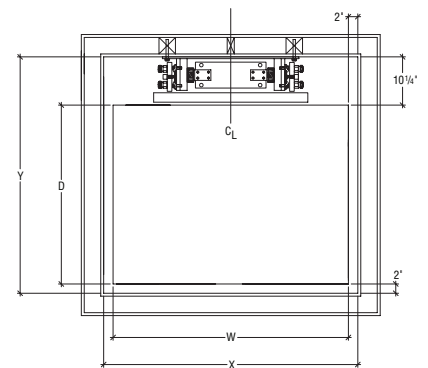
Elevator Details

Typical Car Configurations

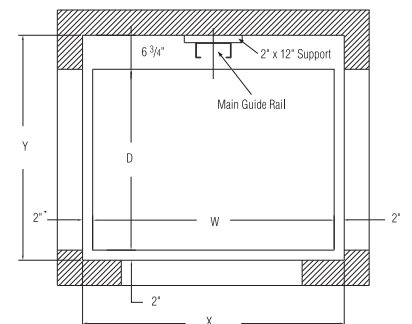
Choose any one of these custom car configurations.



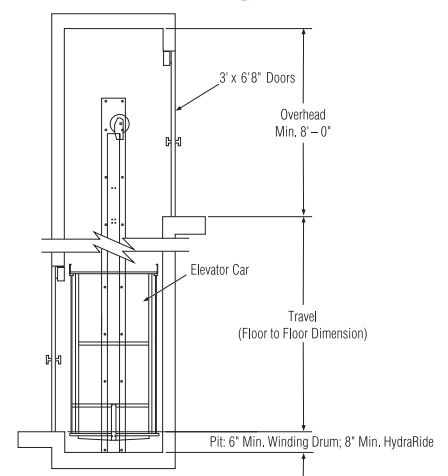
Machine Roomless Car and Shaft Sizes



Cable Drum and Hydraulic Shaft Sizes



Elevator Diagram



Standard Safety Features



Gate Safety Switch

This requires the gate to remain closed during the car's movement.



Car Floating Gate Switch

This stops the car when an object extends through the gate and forces it up or down.



Key Lockout

To render the call station inoperable.

Other Automatic Safety Devices

- Car and gate entrance doors
- Instantaneous dual cable safeties
- Overrun switch
- Slack cable mainline disconnect switch (Cable Drum Drive)
- Safety stop diaphragm and pressure-sensitive interlocked floor door (for 2-landing, cable drum, open-type elevators)

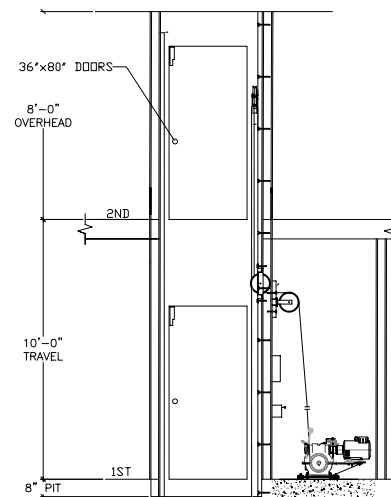


Drive Systems

Machine Room

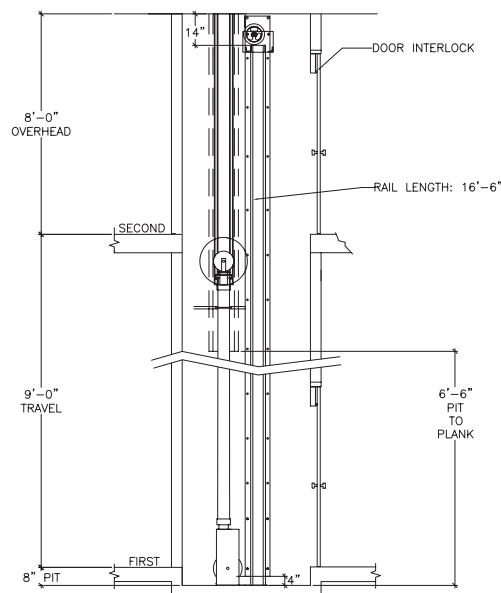
Cable “Drum” Drive: D

- Cable drum: quietest in the industry
- Patented monorail guiding system
- 500 lb. and 750 lb. capacity
- Can accommodate car size up to 12 sq. ft.
- Emergency battery lowering, and/or soft stop (optional)



“Hydraulic” Drive: H

- Hydraulic: smooth, quiet ride
- Patented monorail guiding system
- 750 lb. and 950 lb. capacity
- Can accommodate car size up to 15 sq. ft.
- Emergency battery lowering

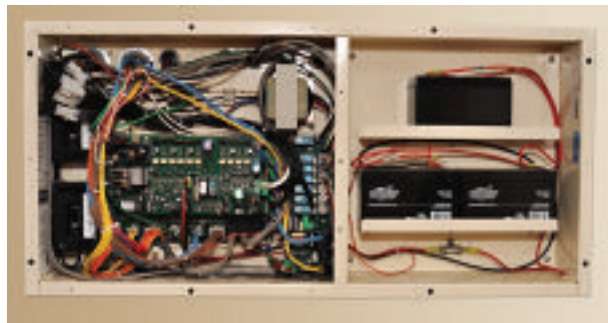
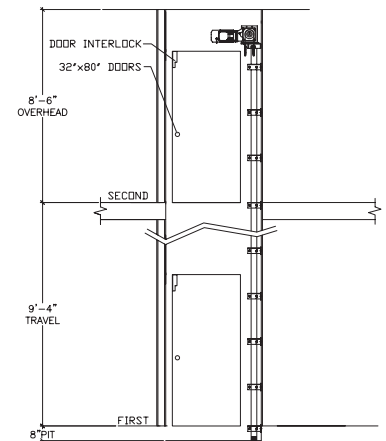
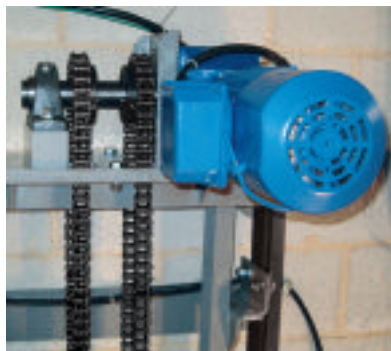




Machine Roomless

Gear Motor "Chain" Drive: C

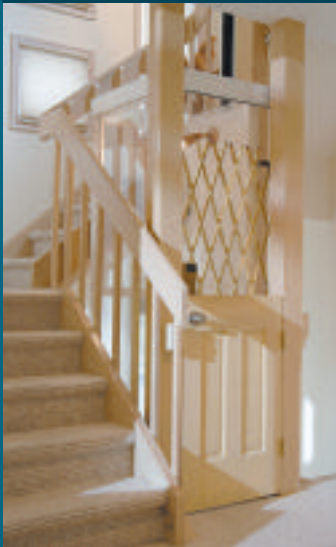
- Gear motor: simple and reliable
- Chain for raising/lowering
- 950 lb. capacity
- Can accommodate car size up to 15 sq. ft.
- Double rail chassis (very stable)
- Emergency battery lowering (easily accessible and replaceable batteries)
- Microprocessor-based controller
- Self-diagnostic



Microprocessor-based controller (on Machine Roomless elevator).

Note: Specifications may change without notice.

You can be confident in choosing an Inclinator product.



HOME ELEVATORS

- The industry's most customizable home elevator
- Two lines: INCLINATOR® LX and ELEVETTE®



WHEELCHAIR LIFTS

- Indoor and outdoor use
- Two lines: SpectraLift® (fiberglass) and VL (steel)



STAIR PACKAGE LIFTS

- 18" x 36" platform with 250 lb. capacity
- Folds up to 9" from wall when not in use



DUMBWAITERS

- Custom sizes and features
- Two lines: Dumbwaiter (commercial & residential) and Homewaiter® (residential)



Inclinator Company of America 601 Gibson Boulevard, Harrisburg, PA 17104
Phone: 717-939-8420 • Toll-Free: 800-343-9007 • Fax: 717-939-8075
E-mail: isales@inclinator.com

Product details and specifications available at
www.inclinator.com